

# Principles of Universal Design

Universal design is the design of buildings, products or environments to make them accessible to all people, regardless of age, disability or other factors.



## 1) Equitable Use



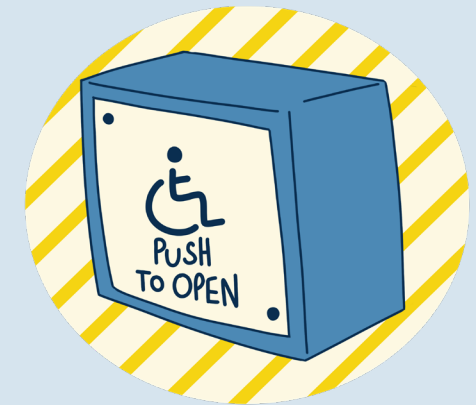
The design is useful and marketable to people with diverse abilities.

## 2) Flexibility in Use



The design accommodates a wide range of individual preferences and abilities.

## 3) Simple and Intuitive Use



Use of the design is easy to understand, regardless of the user's experience, knowledge, language skills, or current concentration level.

## 4) Perceptible Information



The design communicates necessary information effectively to the user, regardless of ambient conditions or the user's sensory abilities.

## 5) Tolerance for Error



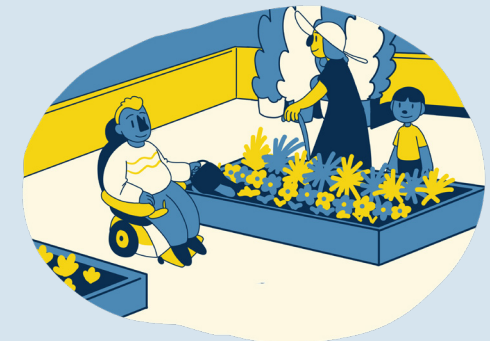
The design minimizes hazards and the adverse consequences of accidental or unintended actions.

## 6) Low Physical Effort



The design can be used efficiently and comfortably and with a minimum of fatigue.

## 7) Size and Space for Approach and Use



Appropriate size and space is provided for approach, reach, manipulation, and use, regardless of user's body size, posture, or mobility.